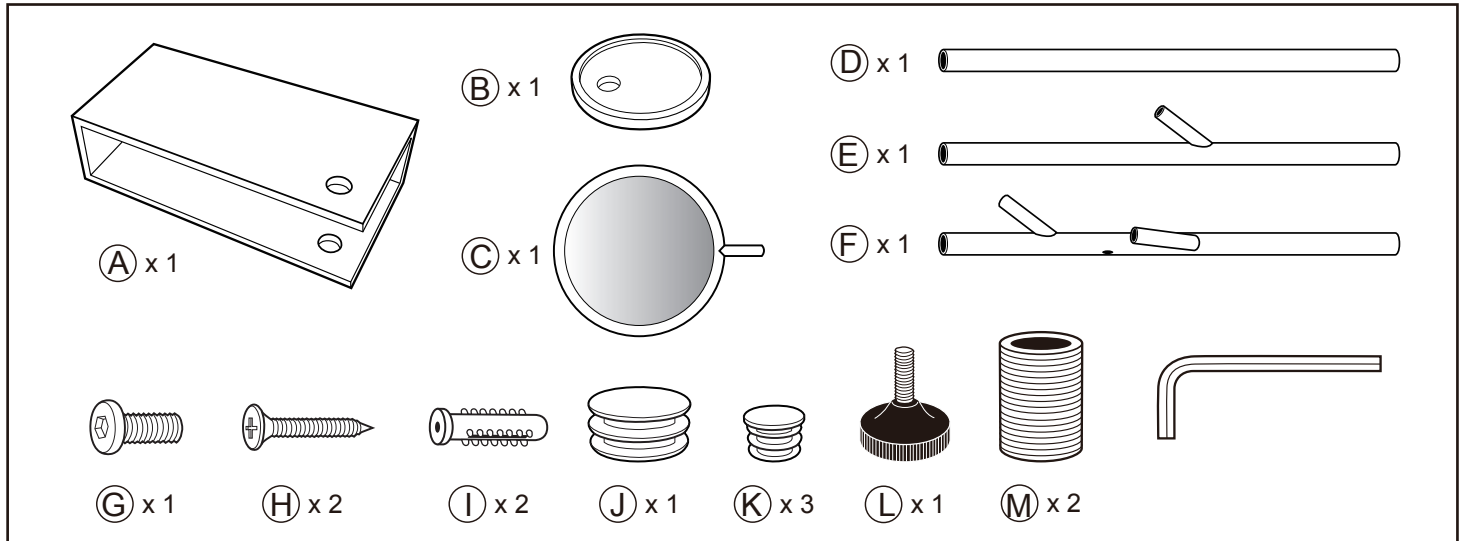


# Assembly instructions

7100011 COAT RACK KANDY

zUIVER<sup>o</sup>



CAUTION : DO NOT TIGHTEN SCREWS COMPLETELY UNTIL ALL THE SCREWS ARE FIXED IN THE CORRECT POSITION. TO MAINTAIN YOUR PRODUCT, WE RECOMMEND THAT IN CASE OF SPILLING, YOU CLEAN THE PRODUCT DIRECTLY.

